



Desktop Printers

DT2x / DT4x

Discover how powerful a Simple of Compact Barcode Printer can be.

DT2x / DT4x are both ultra-light, compact for best space utilization and support multiple communication ports; they are effective and multitasking for printing retail, warehouses, logistic & transportation, health care labels and tags.



Enhanced label feeding mechanism and instant label detection.



- 16MB SDRAM and 4 / 8 MB Flash memory- including 2 / 4 MB user-available memory storage for downloadable objects.
- Print speed: Up to 7"/177 mm per second
- Supports Ethernet, Serial and USB ports.

GoDEX

Specification

DT2x / DT4x

Desktop Printer

Model		DT2x	DT4x
Print Method		Direct Thermal	
Resolution		203 dpi (8 dots/mm)	
Print Speed		7 IPS (177 mm/s)**	
Print Width		2.12" (54 mm)	4.25" (108 mm)
Print Length		Min. 0.16" (4 mm)**; Max. 68" (1727 mm)	
Processor		32 Bit RISC CPU	
Memory Flash		4 MB Flash (2 MB for user storage)	8 MB Flash (4 MB for user storage)
SDRAM		16 MB	
Sensor Type		Adjustable reflective sensor.	Adjustable reflective sensor. Fixed transmissive sensor, central aligned.
Media Types		Continuous form, gap labels, black mark sensing, and punched hole; label length set by auto sensing or programming	
Width		Min. 0.6" (15 mm) – Max. 2.36" (60 mm)	Min. 1" (25.4 mm) – Max. 4.64" (118 mm)
Thickness		Min. 0.003" (0.06 mm) – Max. 0.008" (0.20 mm)	
Label Roll Diameter		Max. 5" (127 mm)	
Core Diameter		1" (25.4 mm), 1.5" (38.1mm)	
Printer Language		EZPL, GEPL, GZPL auto switch	
Software Label Design Software		GoLabel (for EZPL only)	
Driver		MAC, Linux, Windows 2000 / XP / VISTA / Windows 7 / Windows 8.1	
DLL		Win CE, .NET, Andriod, Windows Mobile, Windows 2000 / XP / VISTA / Windows 7 / Windows 8.1	
Resident Fonts Bitmap Fonts		6, 8, 10, 12, 14, 18, 24, 30, 16X26 and OCR A & B Bitmap fonts 90°, 180°, 270° rotatable, single characters 90°, 180°, 270° rotatable Bitmap fonts 8 times expandable in horizontal and vertical directions	
TTF Fonts		CG Triumvirate™ (Bold / Italic / Underline), 0°, 90°, 180°, 270° rotatable	
Download Fonts Bitmap Fonts		90°, 180°, 270° rotatable, single characters 90°, 180°, 270° rotatable	
Asian Fonts		16x16, 24x24, Traditional Chinese (BIG-5), Simplified Chinese (GB2312), Japanese (S-JIS), Korean (KS-X1001)	
TTF Fonts		90°, 180°, 270° rotatable and 8 times expandable in horizontal and vertical directions	
Barcodes 1-D Bar codes		90°, 180°, 270° rotatable	
2-D Bar codes		Code 39, Code 93, EAN 8 /13 (add on 2 & 5), UPC A / E (add on 2 & 5), I 2 of 5 & I 2 of 5 with Shipping Bearer Bars, Codabar, Code 128 (subset A, B, C), EAN 128, RPS 128, UCC 128, UCC / EAN-128 K-Mart, Random Weight, Post NET, ITF 14, China Postal Code, HIBC, MSI, Plessey, Telepen, FIM, GS1 DataBar, German Post Code, Planet 11 & 13 digit, Japanese Postnet, I 2 of 5 with human readable check digit, Standard 2 of 5, Industrial 2 of 5, Logmars, Code 11, Code 49 and Cadablock	
Code Pages		PDF417, Datamatrix code, MaxiCode, QR code, Micro PDF417, Micro QR code and Aztec code. CODEPAGE 437, 850, 851, 852, 855, 857, 860, 861, 862, 863, 865, 866, 869, 737 WINDOWS 1250, 1251, 1252, 1253, 1254, 1255, 1257 Unicode UTF8 、 UTF16BE 、 UTF16LE	
Graphics		Resident graphic file types are BMP and PCX, other graphic formats are downloadable from the software	
Interfaces		USB 2.0 (B-Type) Serial port: RS-232 (DB-9) IEEE 802.3 10 / 100 Base-Tx Ethernet port (RJ-45)	
Control Panel		One Tri-color LED : Power (Green, Orange and Red) Function Key : FEED	
Power		Auto Switching 100-240V AC, 50-60Hz.	
Real Time Clock		Standard	
Environment Operation Temperature		41°F to 104°F (5°C to 40°C)	
Storage Temperature		-4°F to 122°F (-20°C to 50°C)	
Humidity Operation		30-85%, non-condensing.	
Storage		10-90%, non-condensing.	
Agency Approvals		CE (EMC), FCC Class A, CB, CCC, cUL	
Dimension Length		8.58" (218 mm)	8.58" (218 mm)
Height		6.77" (172 mm)	6.53" (166 mm)
Width		3.94" (100 mm)	6.61" (168 mm)
Weight		2.65 lbs (1.2 Kg) ,excluding consumables	3.3 lbs (1.5 Kg) ,excluding consumables
Options & Accessories		Cutter module Label Dispenser External label roll holder for 10" (250 mm) O.D. label rolls External label rewinder	

**Specifications are subject to change without notice. All company and/or product names are trademarks and/or registered trademarks of their respective owners.

Minimum print height and maximum print speed specification compliance can be dependent on non-standard material variables such as label type, thickness, spacing, liner construction, etc. Godex is pleased to test non-standard materials for minimum print height and maximum print speed capability.

Applications

Applications for Labels & Barcodes

DT2x / DT4x are the ultimate tool for barcode printings in any industry.



Warehouses, Logistic & Transportation

Shelf labels, product serial number labels, inventory management, shipping labels, pallet labels, carton labels, etc.



Health Care

Tube tags, pharmaceutical labels, patient identification, medical records and laboratory specimen tags.



Retail

Price tags, content labels, jewelry labels, courier tracking label, receipts for registered mails, bills of landing (B / L), postage labels, etc.

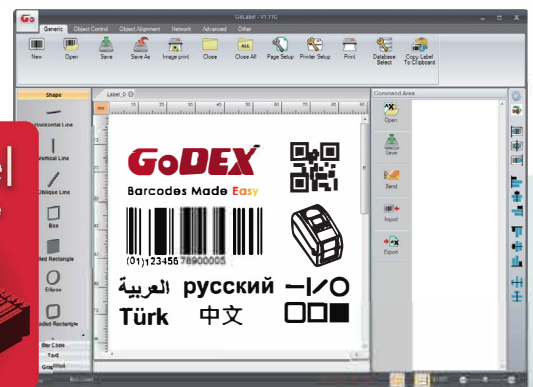
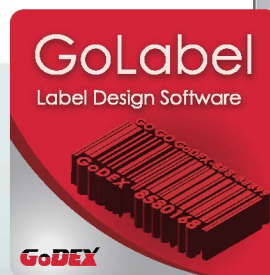
GoDEX

LABEL DESIGN SOFTWARE

GoLabel Software / User Friendly

GoLabel is based on a WYSIWYG (what you see is what you get) user interface, makes everything so easy for you to create and print barcode labels. GoLabel is the first-choice label design software that you can't miss it!

Go visit www.godexintl.com and download GoLabel to experience it!



GoDEX

RIBBONS

High quality original GoDEX thermal transfer ribbons

GoDEX offers premium thermal transfer ribbons that will fit most of your printing applications.

- Wax
- Wax/ Resin
- Resin
- Near Edge

